



Adam J. Metcalfe, SIOR

Post Office Box 2903, Mobile, AL 36652

(P) 251-432-2600 (C) 251-610-0069

adam@metcalfec.com www.metcalfec.com

FOR SALE

Unique Residential Development Land Water Frontage and Access

Location: Riviera Du Chien Road
Southwest quadrant of Riviera Du Chien and
Interstate 10
Mobile, AL

**Legal
Description:** Lot 1, Smith & Sayers Family Subdivision

Size: Approximately 39 acres total
Frontage on Interstate 10, Riviera Du Chien
Road and Hall's Mill Creek

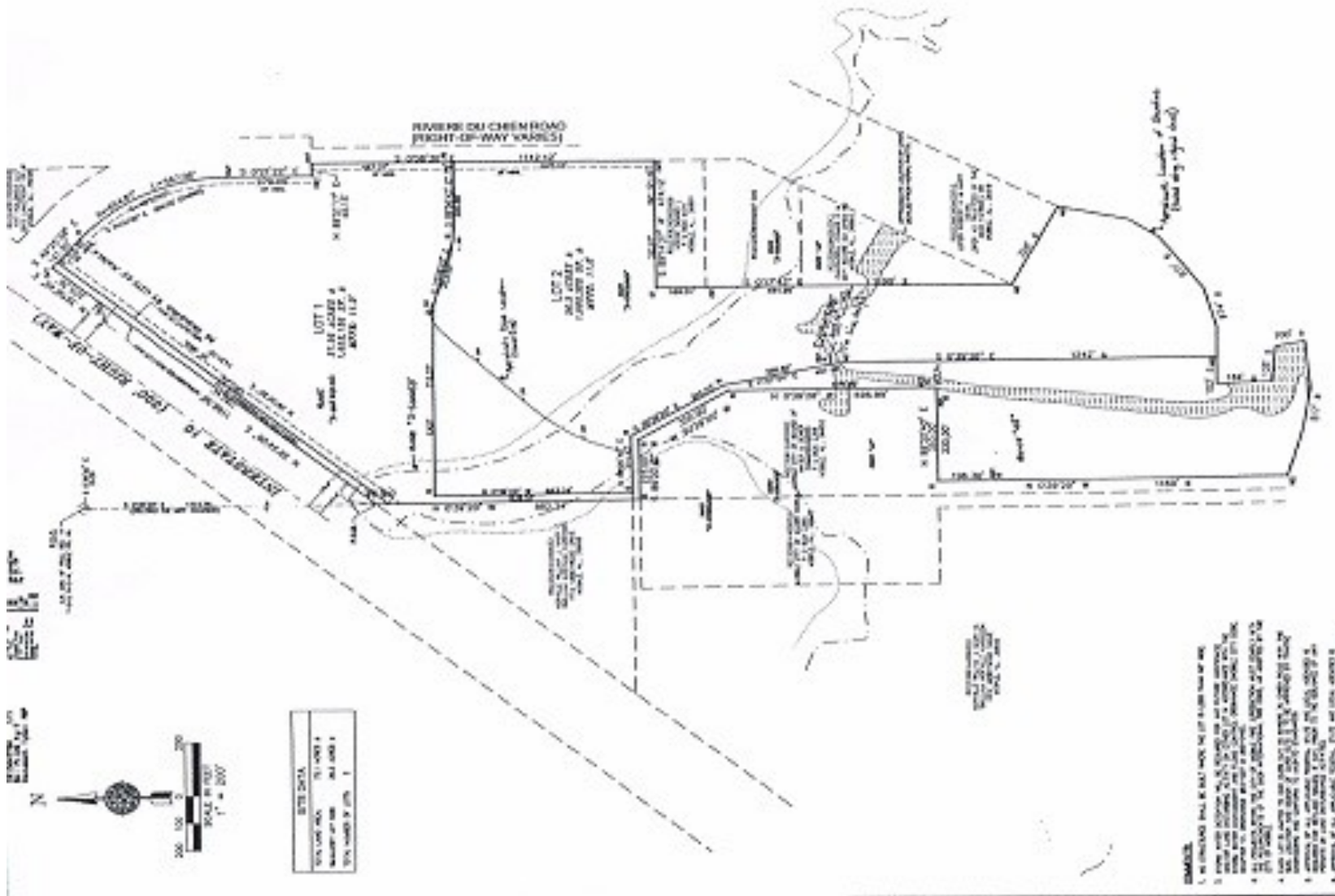
Zoning: R-1, Single Family Residential
City of Mobile

**Additional
Information:** This property can be purchased all or in part

Price: \$725,000



The information provided for by the company is subject to errors, omissions, changes, prior sale or lease and withdrawal from the market without notice by the owner. This information has been gathered from sources that are deemed to be reliable, however there is no warranty or guarantee to its accuracy or validity. You are hereby advised to independently verify the information presented herein.



The information provided for by the company is subject to errors, omissions, changes, prior sale or lease and withdrawal from the market without notice by the owner. This information has been gathered from sources that are deemed to be reliable, however there is no warranty or guarantee to its accuracy or validity. You are hereby advised to independently verify the information presented herein.